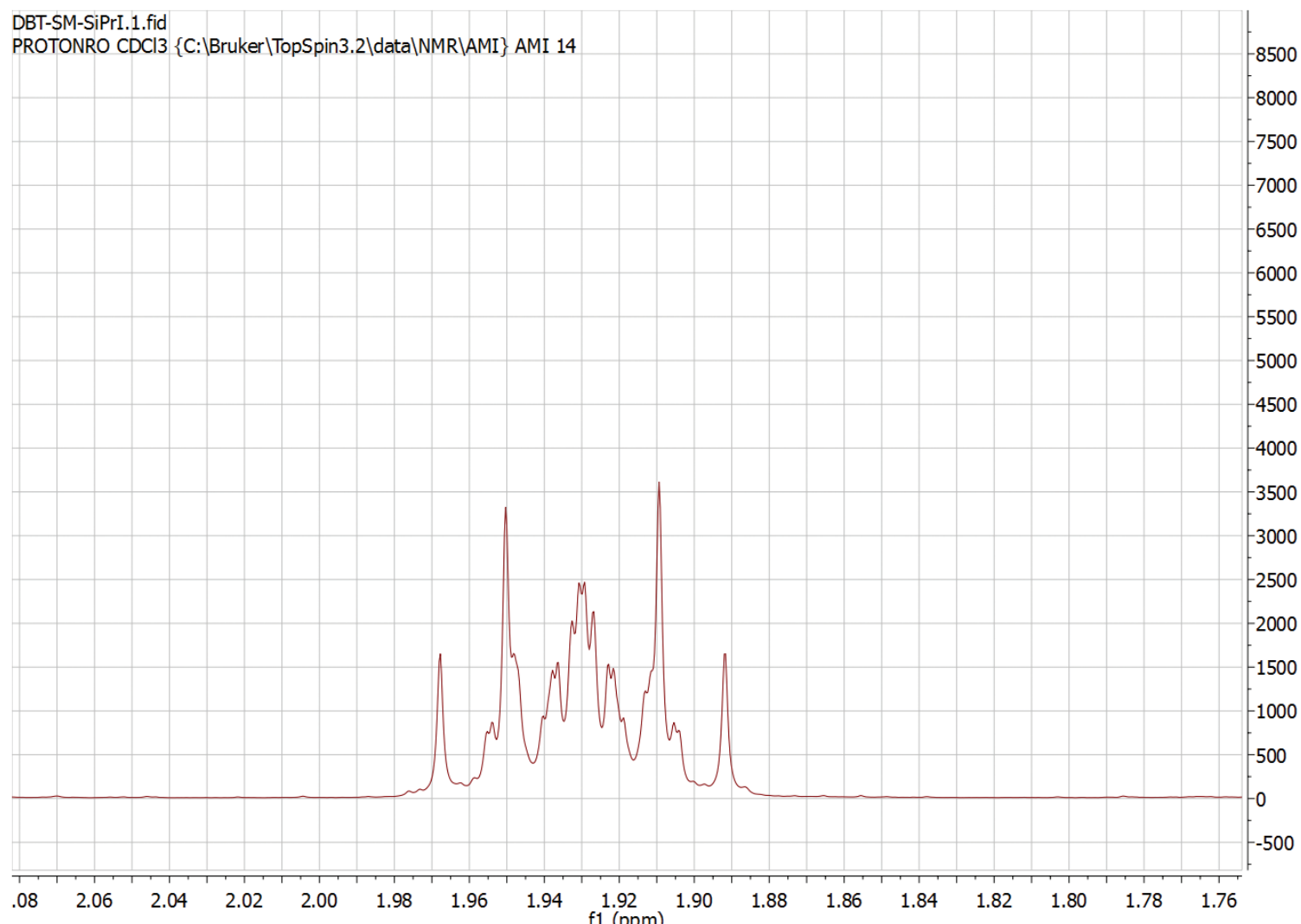


1

NMR is *Art*



Methylene proton's weird coupling

David Bossert, 2015

University of Fribourg | Adolphe Merkle Institute

Field strength: 400 MHz

Why is this your favorite spectrum?

It is my favorite spectrum as I cannot understand the coupling pattern of this one little peak. Therefore, I look at it another way: to me it looks like a front-view of a temple. It reminds me of the Taj Mahal.